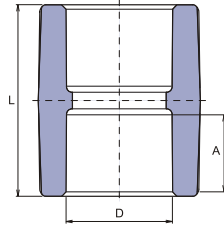
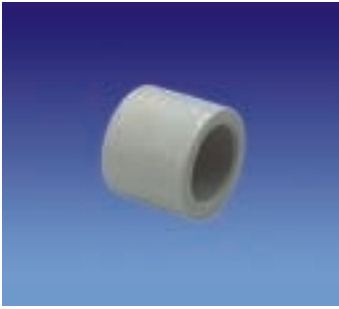


MUFA



D mm	A mm	L mm	C	I.		kg/pc
				I.	II.	
16	13,0	33,0	SNA016XXXX	50		0,008
20	14,5	34,6	SNA020XXXX	50	600	0,012
25	16,0	37,8	SNA025XXXX	50	350	0,017
32	18,0	40,0	SNA032XXXX	20	240	0,034
40	20,5	48,0	SNA040XXXX	20	100	0,062
50	23,5	53,0	SNA050XXXX	10	70	0,102
63	27,5	65,0	SNA063XXXX	5	30	0,202
75	30,0	73,4	SNA075XXXX	1	5	0,331
90	33,0	79,2	SNA090XXXX	1		0,406
110	37,0	88,2	SNA110XXXX	1		0,734